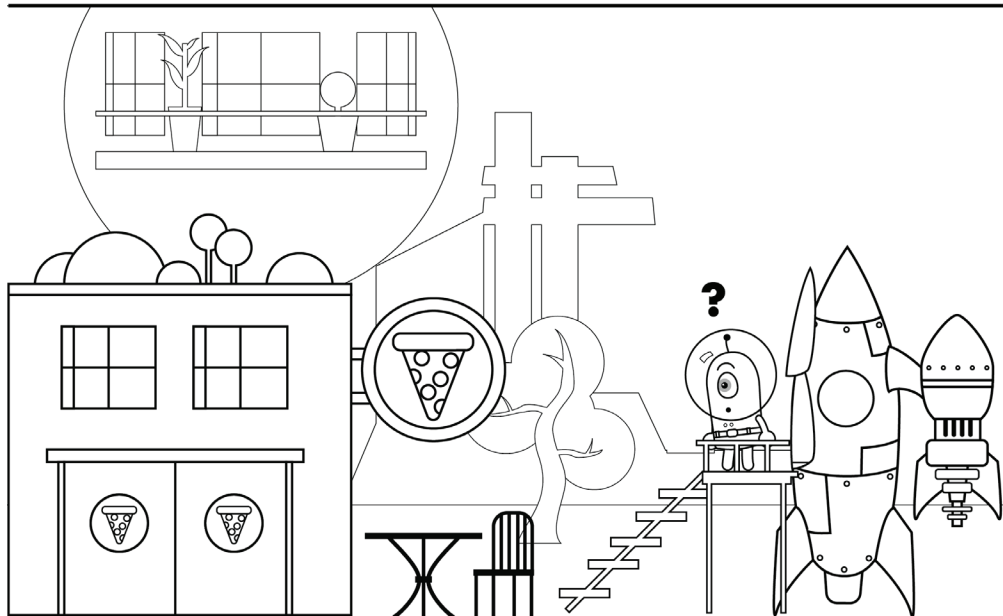
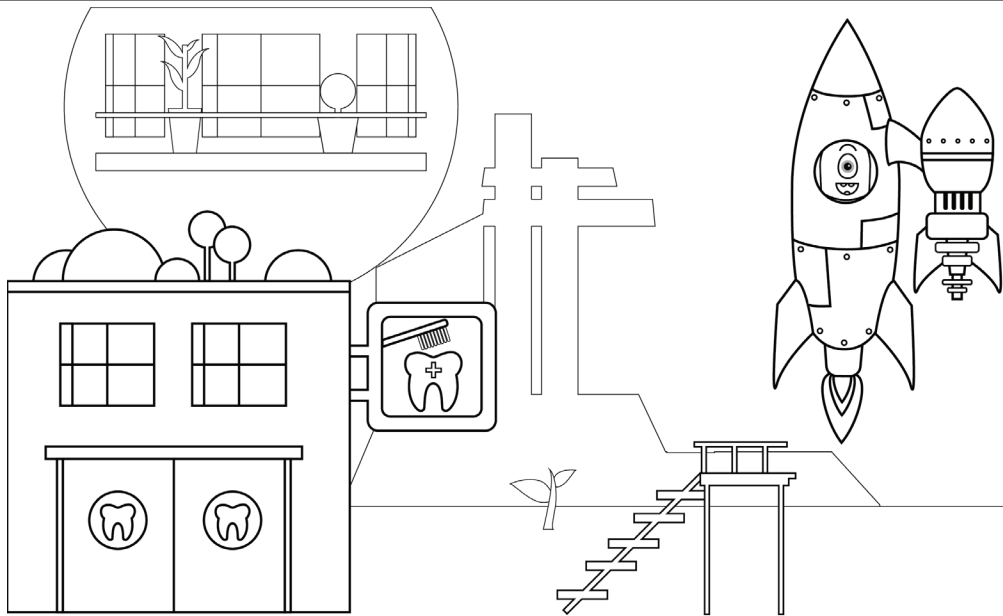


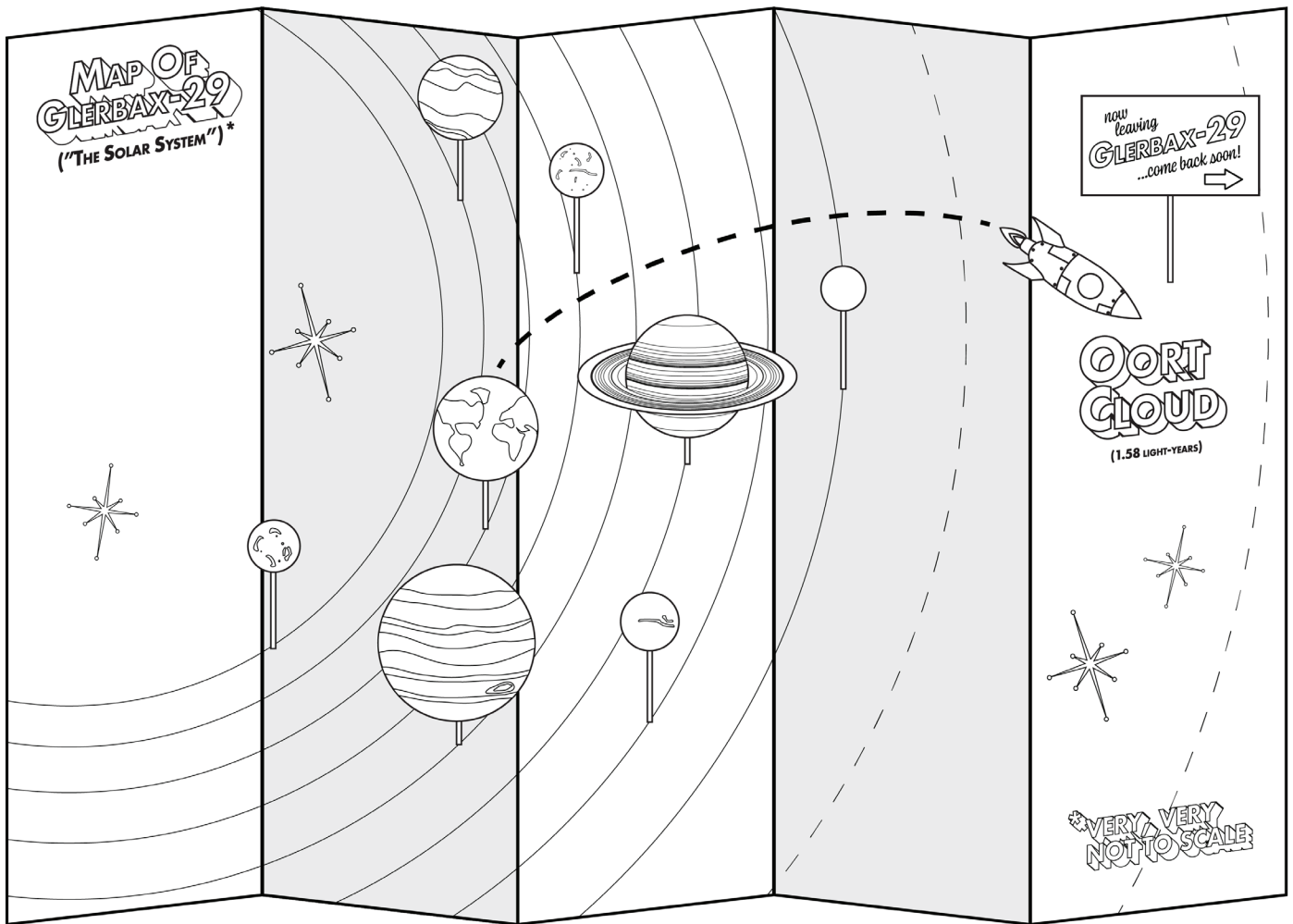
**Thinking of traveling near the speed of light?  
Here are some things you should know first!**



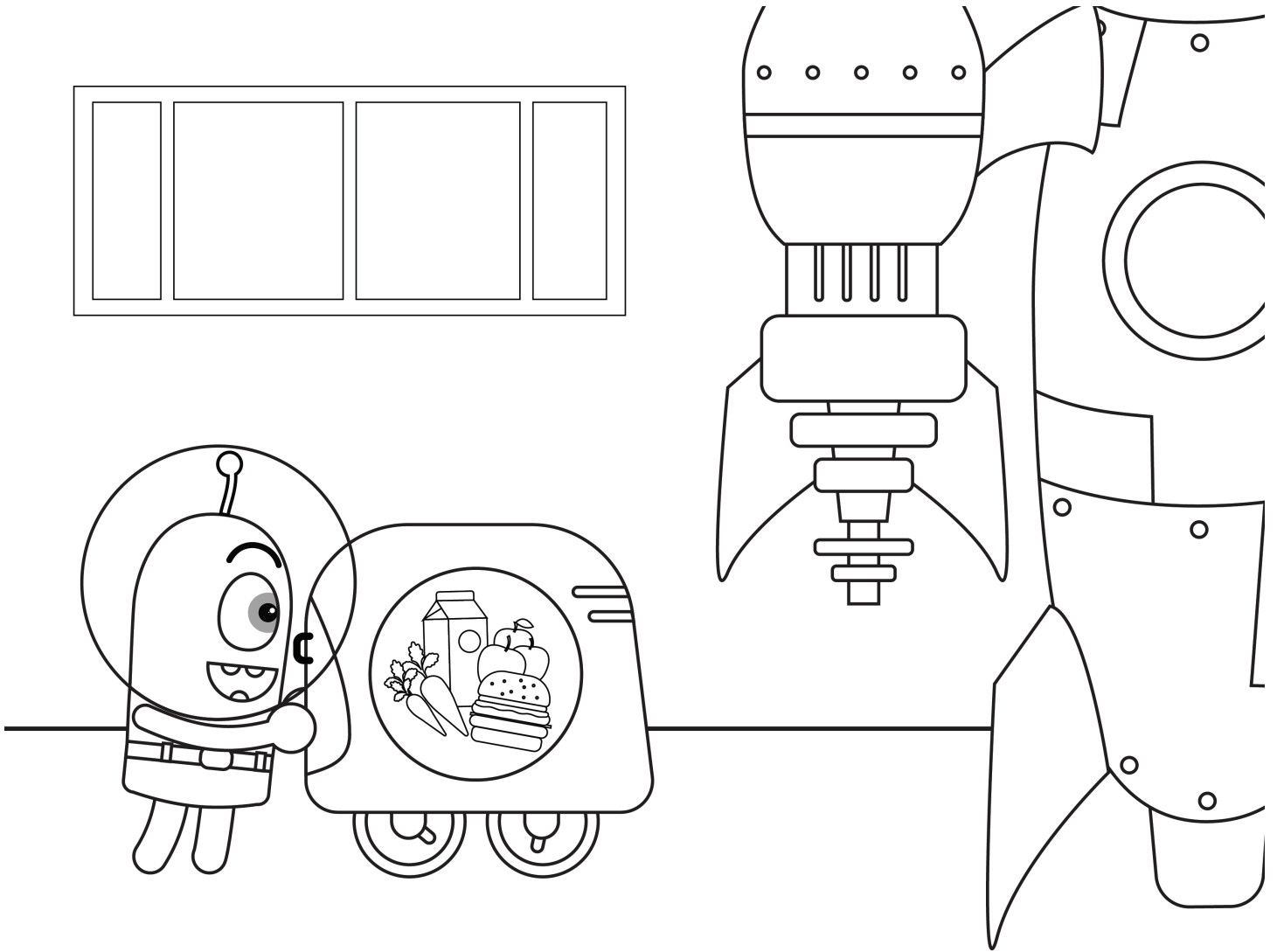
**When you travel near light speed, time runs slower for you than for those who stay behind. Don't miss your dentist appointment!**

**Can you spot the four differences between the top and bottom images?**

Answers: The big signs on the building; the signs on the doors; the tree grew; the new patio and chair by the pizza parlor.



**Even when moving near light speed, space is BIG!  
It would take you over a year just to leave our solar system.**



**Taking a long trip requires a variety of snacks.**